

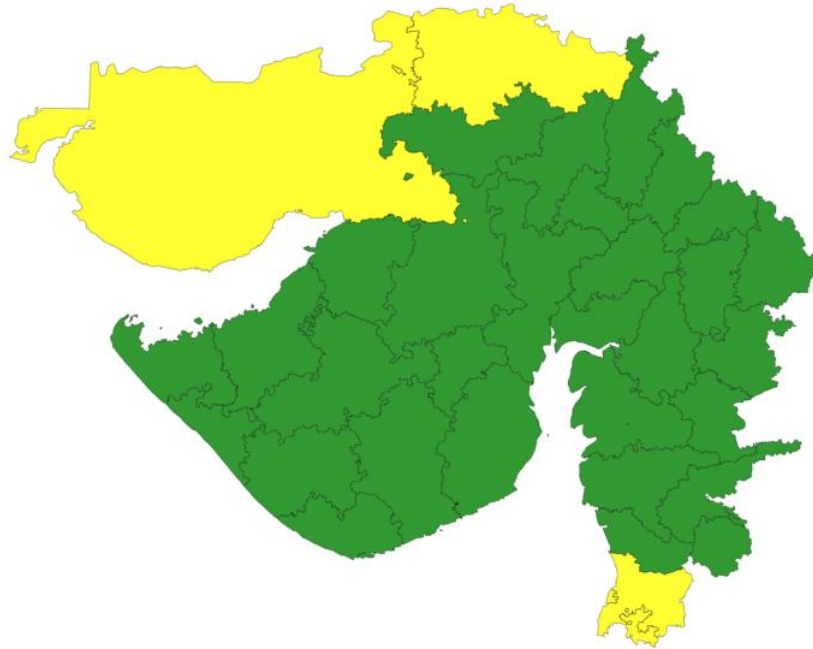
**BHARAT SARKAR**  
**MINISTRY OF EARTH SCIENCES**  
**INDIA METEOROLOGICAL DEPARTMENT**



**DIRECTOR**  
**Meteorological Centre,**  
**RS/RW Building,**  
**Ahmedabad Airport**  
**Ahmedabad-380003**  
**Tel: 079 29702419/29702418/22858020**  
**Date:03/06/2026**

**Nowcast issued at 0700 hrs. IST of 03<sup>rd</sup> June 2026**  
**(valid upto next three hours IST of today)**

**Light rain (< 5 mm/hr) accompanied with light Thunderstorms with maximum surface wind speed less than 40 kmph (In gusts) is very likely at isolated places in the districts of Gujarat state namely **KACHCHH, BANASKANTHA, VALSAD, DAMAN, DADAR & NAGAR HAVELI** with low probability of Cloud to ground lightning (< 30% probability of lightning occurrence).**

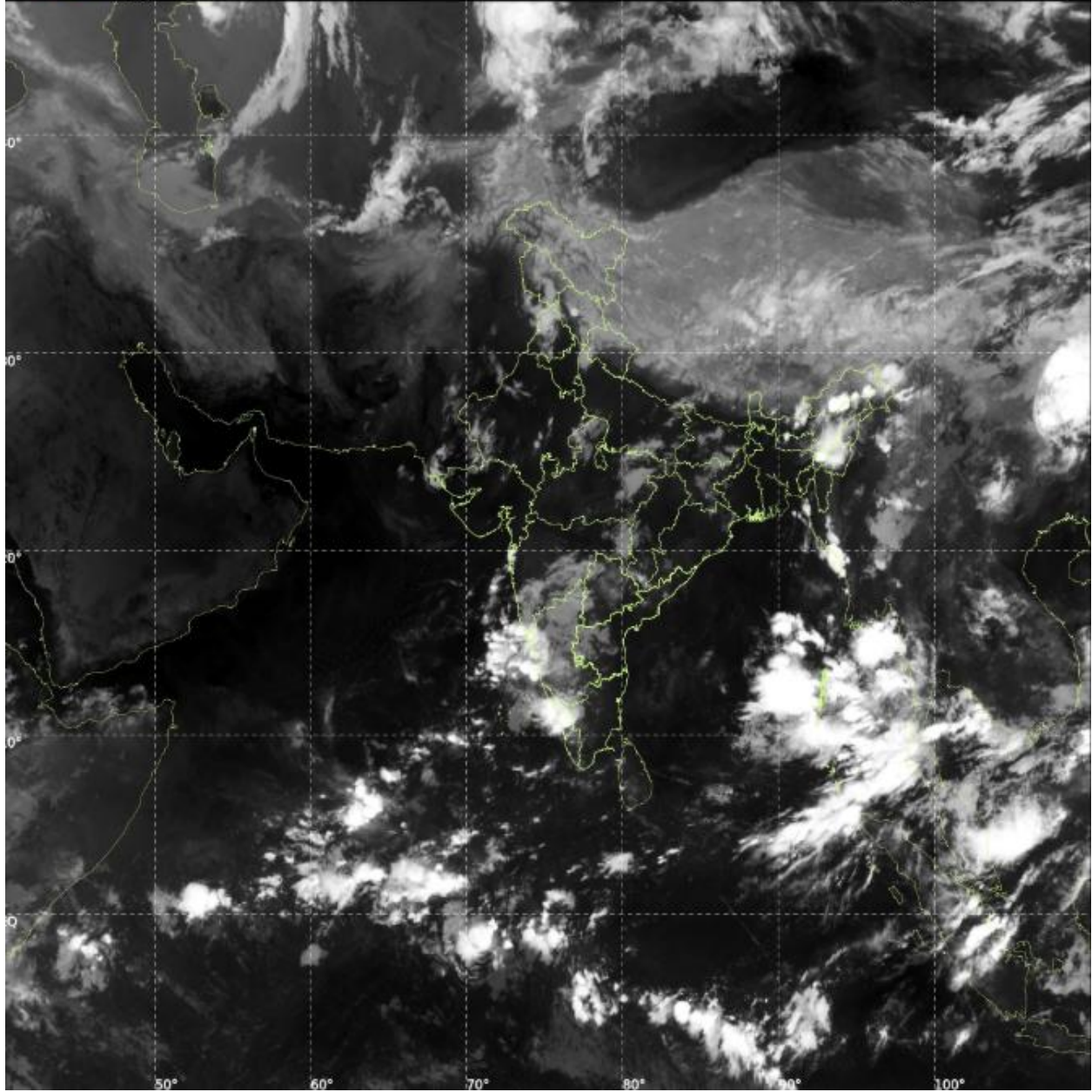




INSAT-3DS IMG, Thermal Infrared1 Count @ 10.83  $\mu\text{m}$   
GMT:03-06-2026/(0030-0057) IST:03-06-2026/(0600-0627)  
L1C MERCATOR (LINEAR STRETCH: 1%)

486

893



<b>Light Rain/Thunder Shower</b>	<b>Moderate Rain/Thunder Shower</b>	<b>Heavy Rain/Thunder Shower</b>
<ol style="list-style-type: none"> <li>1. Localized pooling and flooding of roads</li> <li>2. Occasional accidents and associated disruptions;</li> <li>3. Minor public transportation</li> <li>4. Disruptions</li> <li>5. Minor clogging of drains due to debris flows in drainage areas</li> <li>6. Minor disruption to solar energy output</li> <li>7. Minor impact on agriculture operations. Give shelter to animals that are at risk like chickens etc.</li> </ol>	<ol style="list-style-type: none"> <li>1. Water logging/ flooding in many parts of low-lying areas in the city, Heavy traffic jam problem in many routes of the city.</li> <li>2. Drain water over flow in many parts of city</li> <li>3. Probability of damage vulnerable structure and house.</li> <li>4. Possibility of danger to very old buildings and unmaintained structures.</li> <li>5. Falling of trees/branches and advertising hoardings in gusty winds.</li> <li>6. Temporary or partial closure of airport. Significant impacts to flight operations. Incoming flights could be delayed or diverted depending on airline operation criteria. Departures can be delayed because of water on runway.</li> <li>7. Significant clogging of drains due to debris flows in drainage areas</li> <li>8. Significant disruption to solar energy output</li> <li>9. Significant impact to agriculture – secure livestock and move small animals to shelter. Some loss of crops in flood or soil erosion prone areas.</li> </ol>	<ol style="list-style-type: none"> <li>1. Most of the routes of the city are closed due to waterlogging.</li> <li>2. Water logging/ flooding in most parts of low-lying areas in the city, Heavy traffic jam problem in all the routes of the city.</li> <li>3. Probability of death due to lightning.</li> <li>4. Slum areas along railway track, river and drain may affect severely.</li> <li>5. Localized and short-term disruption to municipal services (water, electricity, etc.)</li> <li>6. Possibility of danger to very old buildings and unmaintained structures.</li> <li>7. Falling of trees/branches and advertising hoardings in gusty winds.</li> <li>8. Extensive clogging of drains due to debris flows in drainage areas.</li> <li>9. Severe disruption to solar energy output</li> <li>10. Severe impact on agriculture – loss of livestock and significant loss of crops due to flooding and soil erosion – impact on economy and livelihoods</li> </ol>

**Kindly visit**  
**for updates regarding weather**

**NOWCAST: DISTRICT WISE NOWCAST WARNINGS**

<https://mausam.imd.gov.in/ahmedabad/>, <https://mausam.imd.gov.in/>